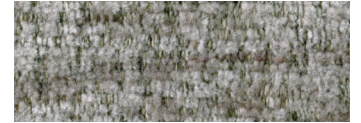




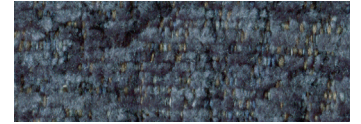
Standard Fabrics:



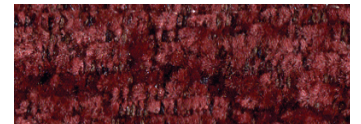
Anchor



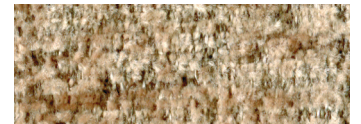
Bittersweet



Oxford



Port



Sandstorm

This fabric has a modern, updated look with rich color options. It features our exclusive SofTouch™ with Stain Defense coating.

* An upcharge will apply for all crossover fabrics.

Comforter with MaxiComfort & Twilight PR545



Comfort Zone™
by GOLDEN

The new PR545 power lift recliner expands Golden's long-standing, popular Comforter model with MaxiComfort® Positioning and now Twilight Technology. This luxurious chair offers three Comfort Zones. Zones 1 and 2 work together for individualized positioning of the upper and lower body, along with Comfort Zone 5 to elevate your wellness comfort experience with our patented Twilight Technology. Discover full body revitalization and relief like you've never felt before with our exclusive Zero Gravity+ (ZG+) positioning technology. Our patented wellness technology provides the perfect 30-degree tilting motion, cradling your body to recline in the optimal ergonomic supportive position. The PR545 comes in three sizes to suit everyone's needs - medium, large, and tall.

Standard Features:

- Patented Twilight Tilt Technology
- Patented MaxiComfort® Positioning
- Programmable AutoDrive™ Hand Control
- Extra Pocket
- USB Charging Port

Upgrade Options:

- NEW HeatWave Technology
- Deluxe Therapeutic Heat & Massage



MAXICOMFORT® Series PR545

Model Number	PR545-MED	PR545-LAR	PR545-TAL
Size	Medium	Large	Tall
Class II Medical Device	YES	YES	YES
Weight Capacity	375 LBS	375 LBS	375 LBS
Positioning	MaxiComfort	MaxiComfort	MaxiComfort
Comfort Zone(s)	3	3	3
Twilight Technology	YES	YES	YES
ZG+ Position	YES	YES	YES
Chaise Seat	YES	YES	YES
Pocketed Coil Seat	YES	YES	YES
Back Type	Seam	Seam	Seam
Removable Back Type	Bracket	Bracket	Bracket
Head Rest Cover	Standard	Standard	Standard
Arm Rest Covers	Standard	Standard	Standard
Overall Width	32"	35"	35"
Overall Height	42"	43"	48"
Width Between Arms	21"	23"	23"
Floor to Top of Seat	20"	21"	23"
Seat Depth	20"	21"	22"
Seat to Top of Back	28"	30"	32"
Seat to Top of Arm	5"	6"	6"
Distance Required from Wall Reclined	23"	24"	28"
Extension reclined from Back of Seat to End of Foot Rest	41"	41"	44"
Life Time Warranty, Chair Frame, Lift Frame, Recline Mechanism	YES	YES	YES
Warranty on Electrical Parts	3 YR	3 YR	3 YR
Pro Rated Years 4 Thru 7	YES	YES	YES
Warranty on Mechanical Labor	3 YR	3 YR	3 YR
Warranty on Electrical Labor	1 YR	1 YR	1 YR
Hand Control Routing	Inside Arm	Inside Arm	Inside Arm
Extra Pocket Option	Standard	Standard	Standard
Heat & Massage Option	YES	YES	YES
HeatWave Technology Option	YES	YES	YES
Articulating Headrest Option	NO	NO	NO
Adjustable Lumbar Option	NO	NO	NO
Foot Rest Extension Option	NO	NO	NO
Straight Lift Option	NO	NO	NO
USB Charging Port	Control Box	Control Box	Control Box
Battery Backup	Lithium-Ion	Lithium-Ion	Lithium-Ion
SmartTek® Diagnostic System	Standard	Standard	Standard
Place of Origin	USA	USA	USA

SmartTek® Diagnostic System is STANDARD on all Golden models.
All Golden lift chairs are Class II Medical Devices.



TWILIGHT

The World's Most Advanced
Power Positioning Lift Recliner
with Patented
Twilight Technology!

HEALTHY BENEFITS:

- Elevates Feet Above Heart
- Alleviates Pressure On Lungs
- Redistributes Weight More Easily
- Relieves Pressure Points
- Encourages Proper Posture
- Supports Natural Shape of Spine

What is the ZG+ position?



The "+" stands for our patented tilting motion and movement of the

seat box, elevating your zero gravity experience in a way other recliners can't. The weightless experience is one-of-a-kind!

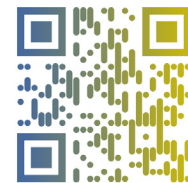


Comfort Zone™ by GOLDEN

Comfort Zones 1, 2 & 5 combine our two positioning patents providing ergonomic placement of your lower body with a tilting motion that allows for greater leg elevation.



WE PATENTED COMFORT™



Scan with your smartphone camera to learn more about Comfort Zone by Golden.



Phone: 800-624-6374
Fax: 800-628-5165
www.goldentech.com



Literature is current at time of printing. Golden Technologies reserves the right to make changes to the product or literature at any time.

Sizes may vary depending on fabric, filling material, upholstery and carpet thickness. All measurements taken on concrete floor using levels and metal rulers.



Complies with
UL 73 and
CSA C22.2 No. 68



www.facebook.com/goldentechnologies

SHT-PR545-051723